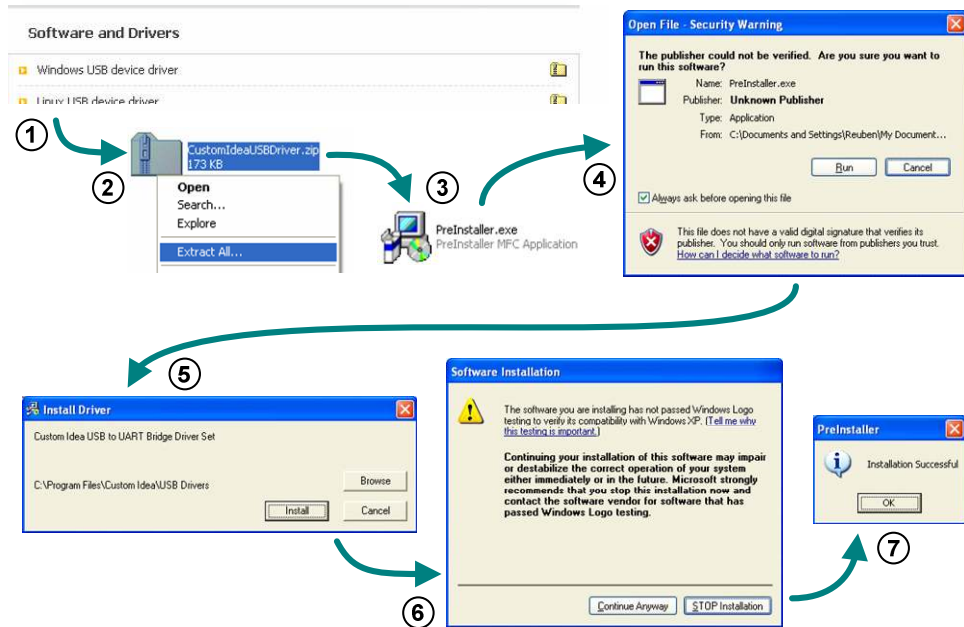


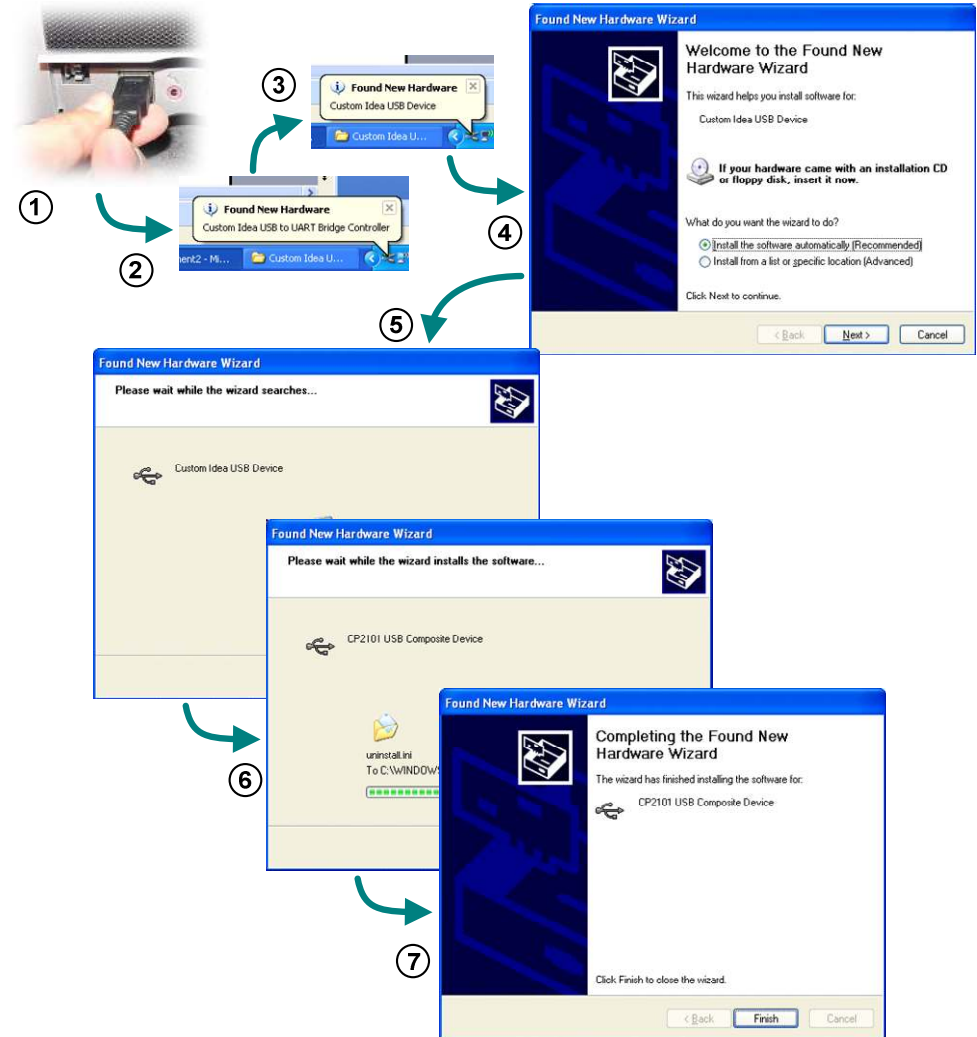
Overview: This document guides your through the process of installing the Windows virtual COM port (VCP) drivers required for our USB based devices to appear as a COM port on your PC. The guide is based on Windows XP SP2 but will be similar for other Windows versions. The versions are included in this document, a brief version in the next paragraph which is for people who are happy with driver installations and a full version, complete with screenshots.

The brief version: Those of you who are used to installing drivers and software will not need to follow the very basic step by step guides on the next four pages and instead can simply follow this brief guide: Download and unzip the USB driver from the software and drivers section of our website. Run the file PreInstaller.exe, then plug the device into the system. Let the system install the driver automatically. Note that this process will happen twice because the USB controller and the USB to UART bridge are treated as separate items on your computer. Once both are installed go to device manager and look under the COM ports to find out which COM port the HR-USBUART has been assigned to. The driver can be uninstalled by going to add/remove programs.

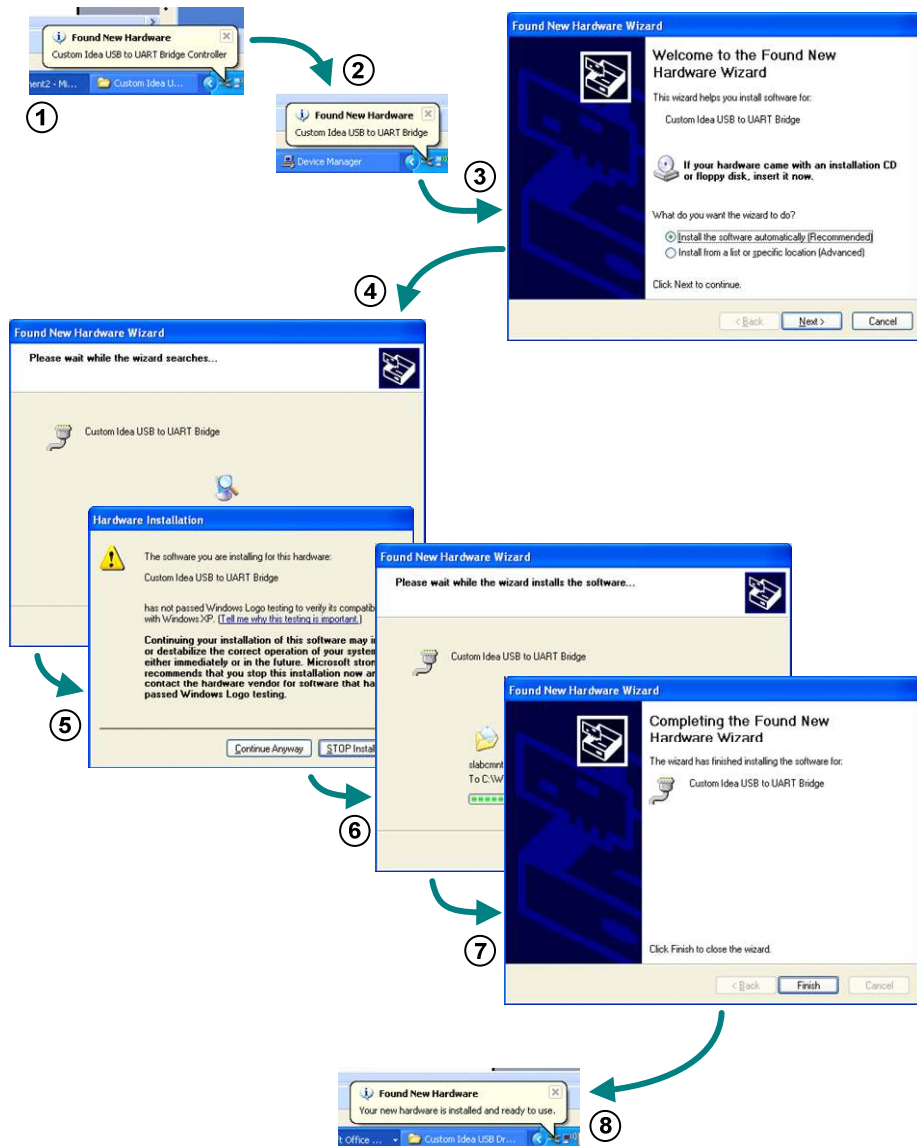
The long version, STEP 1: Download the zipped up USB driver archive from the software and drivers section of Custom Idea's website (1) and extract the files in the archive to a location on your computer (2). Run the extracted file called 'PreInstaller.exe' (3), clicking 'Run' if any verification warnings pop up (4). Click install to install the pre-installer (5) (you may have to wait while the system is scanned) and click 'Continue Anyway' if it fails the Windows logo testing (6). Finally click 'Ok' at the 'Installation Successful' window. You may have to restart your system to complete installation.



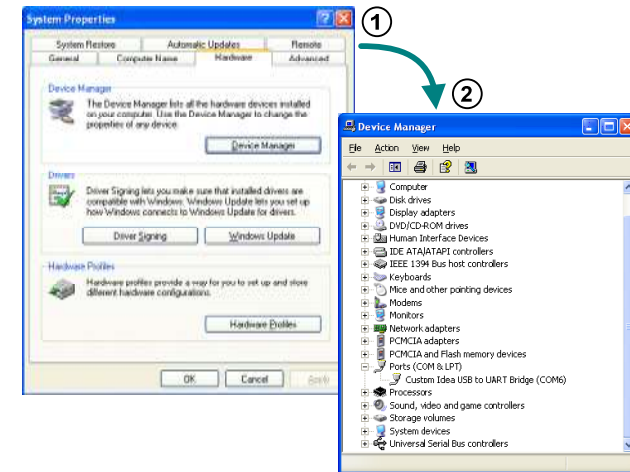
The long version, STEP 2: Our USB devices are treated as two distinct devices to the computer, a USB controller ('Custom Idea USB Device') and a USB to UART bridge ('Custom Idea USB to UART Bridge'). Do not worry that the computer seems to go through and install the device twice – it isn't, it is just installing the USB controller and then the USB to UART bridge. Plug the device into the PC (1) you will notice the computer detect the USB device (2) and then the USB to UART bridge (3) through the 'bubbles' at the bottom right of your screen. The 'Found New Hardware Wizard' will then open (4) at which point make sure the 'install the software automatically (Recommended)' is selected and click 'Next'. The wizard will then search for the driver (this can take a while) (5) install it (6) and indicate that it has been installed correctly (7). If before point (6) Windows complains about Logo testing just click 'Continue Anyway'. Click 'Finish' to continue with the installation



The long version, STEP 3: The computer will now go ahead and install the USB to UART bridge part of the USB device. A couple of bubbles may well pop up again to indicate it has detected the device (1 & 2) then the 'Found New Hardware Wizard' will again open (3) at which point make sure the 'install the software automatically (Recommended)' is selected and click 'Next'. The wizard will then search for the driver (4) and when it has been found it may warn about Windows logo testing (5) in which case just click 'Continue Anyway' and the driver will be installed (6) and the wizard will indicate that it has completed (7). Click 'Finish'. A bubble may appear indicating that the hardware is now ready to use (8).



The long version, STEP 4: The device is now completely installed on your machine and can be used as a normal COM port. To find out which COM port the device has been assigned to go to the control panel and open the 'System Properties' window (or just press the Windows button and Pause button together) (1) and click the 'Device Manager' button to open the 'Device Manager' window (2). Expand the Ports icon and find the 'Custom Idea USB to UART Bridge' entry which will tell you what COM port has been assigned (in this case COM6).



Other guides available: Two other guides also exist which you may find of use, one explains how to test the HR-USBUART device using HyperTerminal, and the other explains how to manually change the COM port assignment to allow our devices to be used with programs which only support a limited COM port range. Both of these guides, and others, can be found on the 'Installation Guides' section of our website www.customidea.com. If you are looking for the manual for your device then you will find this in the 'Product Manuals' section of our website www.customidea.com.

Uninstalling the device: If there is a problem with the installation and you wish to remove it from your system simply go to 'Add or Remove Programs' in control panel, find the device and uninstall it. You may find that the device is incorrectly labelled in this list as a 'CP2101' device.

More information: Our USB devices are based around the CP210X chips from Silicon Labs, who also provide the driver. For more detailed technical information and information on drivers for other platforms please consult Silicon Labs.

Contact: If you have any problems or questions about this device, or are kind enough to give feedback, comments or suggestions then please do not hesitate to email: support@customidea.com.